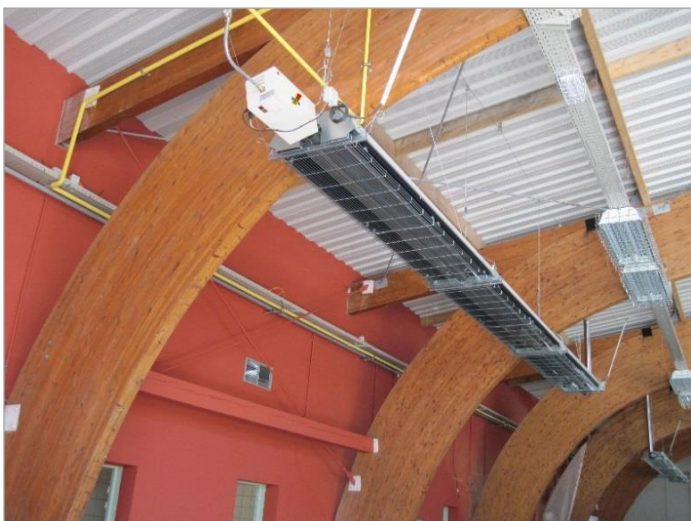
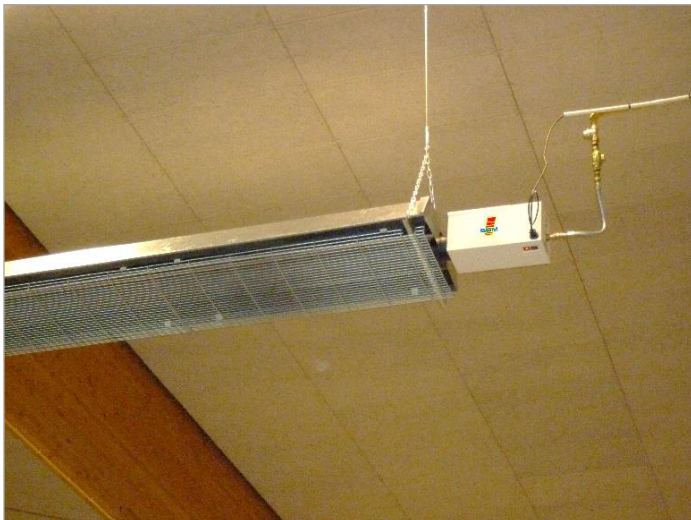


RADIANT TUBE HEATER

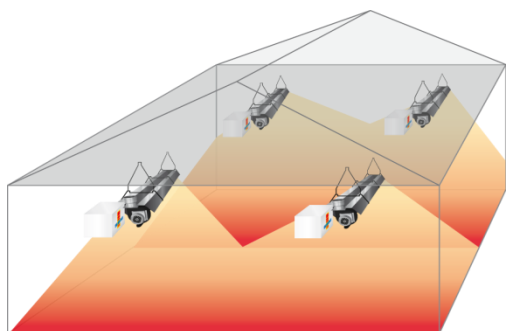
HyperTube L +



- ✓ High radiation factor tubes, up to 0.71
- ✓ Reflector with high density insulation
- ✓ Annealed steel transmitters with integrated turbulator = high combustion efficiency
- ✓ Flame detection by ionisation
- ✓ Possibility of connection for evacuation of combustion products



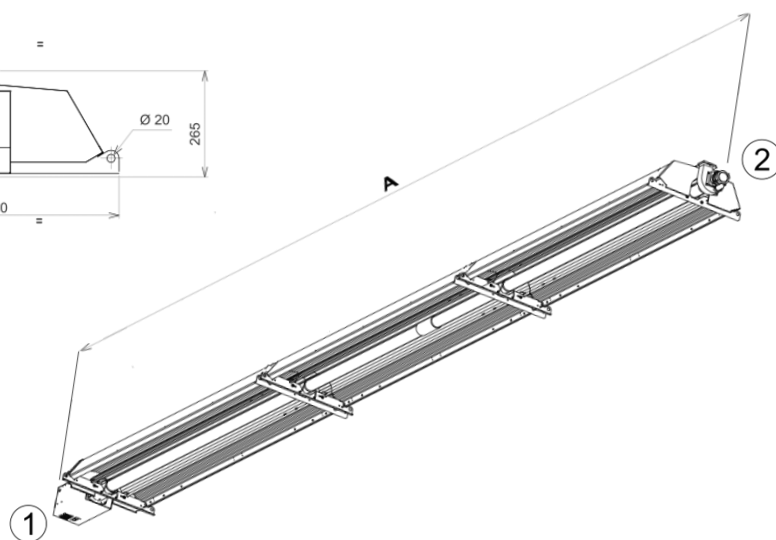
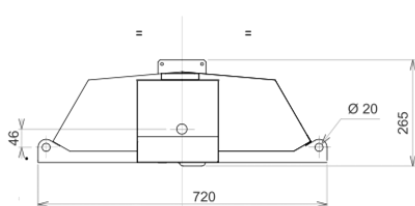
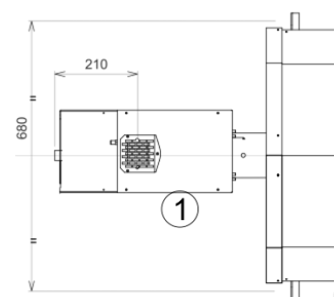
FUNCTIONING



The infrared heating by radiant tube heaters brings **comfort** directly to the users, thus generating **energy savings**. With its high radiation factor, the HYPERTUBESplus generate **more energy savings!**

SBM radiant tube heaters can be connected in a chimney for combustion air and the evacuation of combustion products. Especially efficient for **insulated buildings up to 7m high**.

DIMENSIONS



- ① Combustion air
- ② Combustion products

TECHNICAL DATA

MODEL		L17Plus	L21Plus	L35Plus	L45Plus
Nominal power	kW	18.3	23.3	38.9	50.0
Seasonal efficiency (CE norm: > 74%)	%	> 85 %			
Radiation factor	-	0.65	0.69	0.71	0.65
Combustion efficiency (CE norm : >85)	% PCI	89	90		
GAS					
Gas consumpt. in G20-20mbar	m ³ /h	1.75	2.22	3.70	4.76
Gas consumpt. in G25-25mbar	m ³ /h	2.03	2.58	4.31	5.54
Gas consumpt. in G31-37mbar	kg/h	1.28	1.63	2.72	3.50
Gas input connection		G3/4" male (ISO 228)			
ELECTRICITY					
Power supply		230V (+10% - 15%) – 50Hz Neutral mandatory			
Starting power	VA	115			
Power in operation	VA	80			
Burner and extractor protection fuse		1 fuse 5A			
DIMENSIONS					
Weight	kg	119	127	226	320
A	mm	6210	8840	11 110	16 060

Certificate number **CE** : 1312 BL 3199

Nox class : 4 (< 100 mg/kWh)

