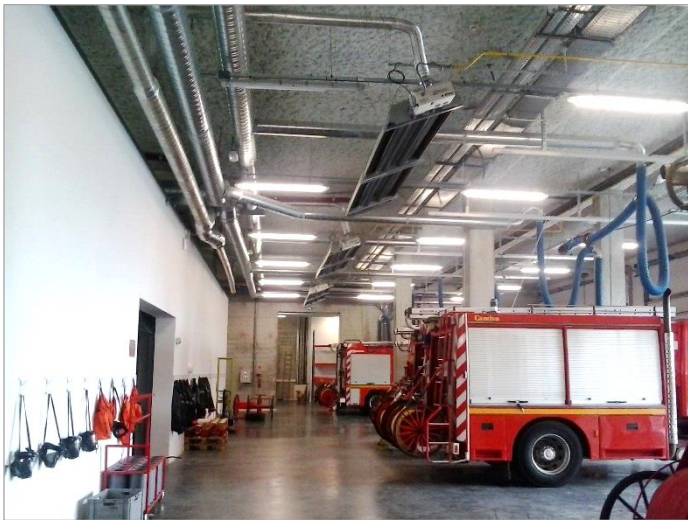


# RADIANT TUBE HEATER

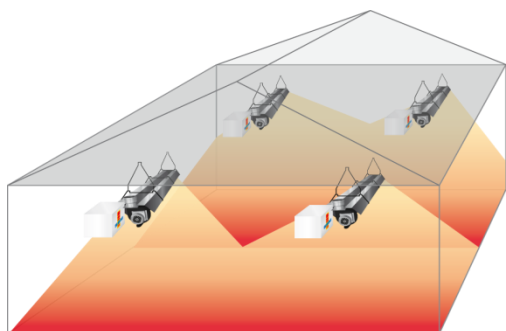
## HyperTube U+



- ✓ High radiation factor tube heaters, up to 0.71
- ✓ Reflector with high density insulation
- ✓ Annealed steel transmitters with integrated turbulator = high combustion efficiency
- ✓ Flame detection by ionisation
- ✓ Possibility of connection for evacuation of combustion products



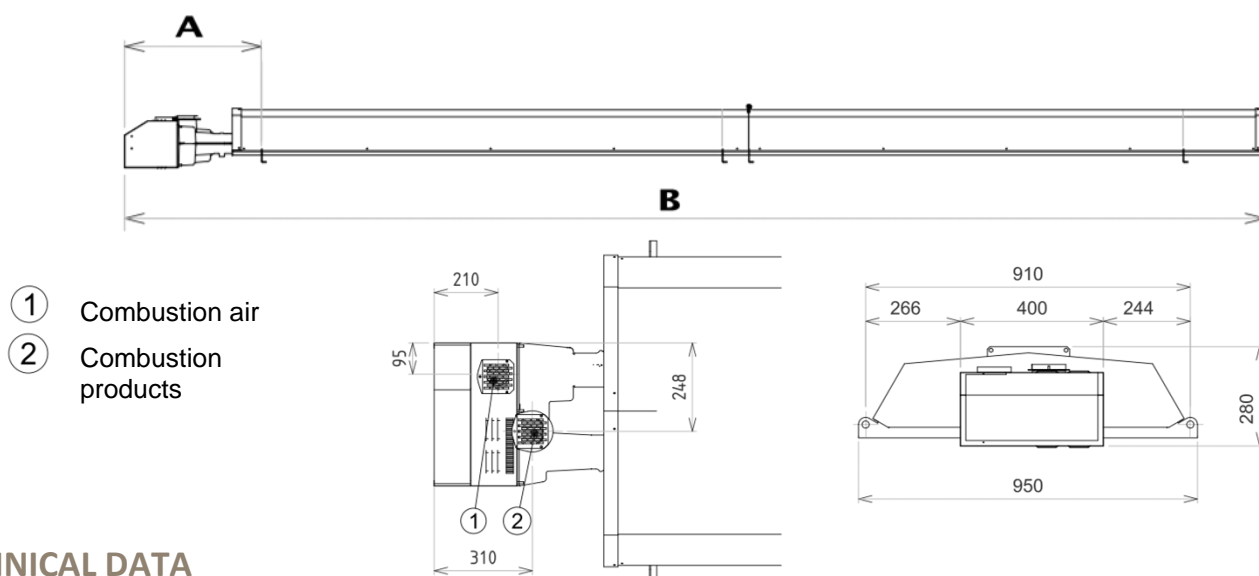
## FUNCTIONING



The infrared heating by radiant tube heaters brings **comfort** directly to the users, thus generating **energy savings**. With its high radiation factor, the HYPERTUBESplus generate **more energy savings!**

SBM radiant tube heaters can be connected in a chimney for combustion air and the evacuation of combustion products. Especially efficient for **insulated buildings** up to **7m** high.

## DIMENSIONS



## TECHNICAL DATA

MODEL		U17Plus	U25Plus	U35Plus	U45Plus
Nominal power (kW)	kW PCS	18.3	27.8	38.9	50.0
Seasonal efficiency (CE norm: > 74%)	%	> 85 %			
Radiation factor	-	0.65	0.69	0.71	0.65
Combustion efficiency (CE norm : >85)	% PCI	89	90		
<b>GAS</b>					
Gas consumpt. in G20-20mbar	m <sup>3</sup> /h	1.75	2.65	3.70	4.76
Gas consumpt. in G25-25mbar	m <sup>3</sup> /h	2.03	3.08	4.31	5.54
Gas consumpt. in G31-37mbar	kg/h	1.28	1.94	2.72	3.50
Gas input connection		G3/4" male (ISO 228)			
<b>ELECTRICITY</b>					
Power supply		230V (+10% - 15%) – 50Hz Neutral mandatory			
Starting power	VA	120			
Power in operation	VA	70			
Burner and extractor protection fuse		1 fuse 5A			
<b>DIMENSIONS</b>					
Weight	kg	115	142	246	318
A	mm	630	630	680	680
B	mm	3910	5050	8570	10 850

Certificate number **CE** : 1312 BL 3197  
NOx class : 3 (< 150 mg/kWh)

