

LUMINOUS HEATER

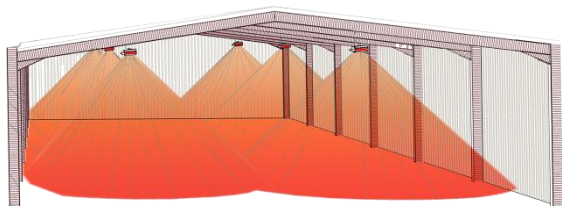
RI



- ✓ Exceptional heating comfort
- ✓ Extended service life
- ✓ Double speed option
- ✓ Simplified installation (no drilling of the building envelope)
- ✓ Compatible with GTB/GTC systems
- ✓ Flame control by ionisation



OPERATION

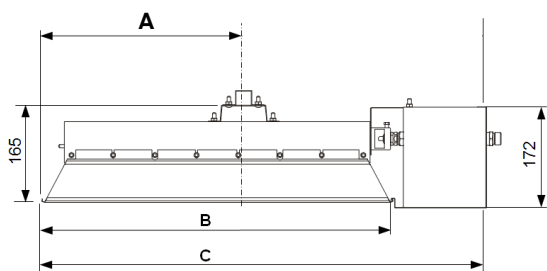


Infrared heating solution brings **comfort** directly to the end users level and limiting heat losses then generating **energy savings**.

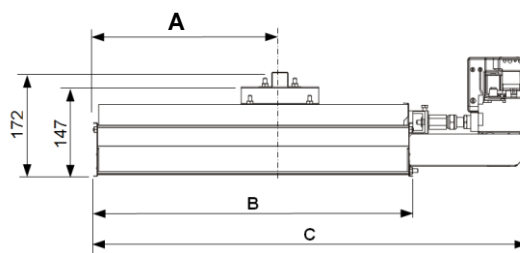
The SBM solution is efficient even for not insulated buildings with height from **4 to 25 m** or **outdoor heating**.

DIMENSIONS

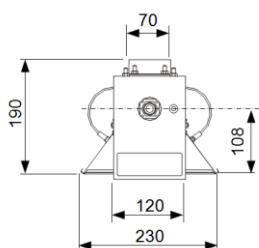
RI 6 to 16



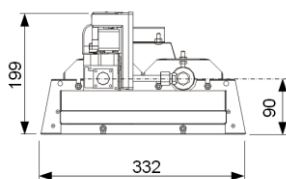
RI 20 to 64



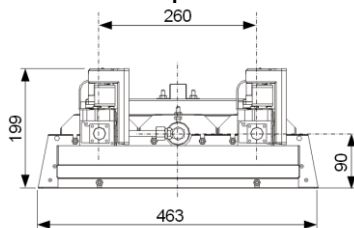
RI 6 to 16



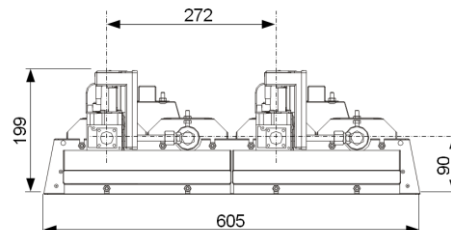
RI 20 to 32



RI 48



RI 64-2



TECHNICAL DATA

MODEL	RI 6	RI 8	RI 10	RI 12	RI 16	RI 20 RI 20-2	RI 24 RI 24-2	RI 32 RI 32-2	RI 48-2	RI 64-2
Nominal power (kW)	2.8	3.7	4.2	5.7	7.5	8.4	11.3	15.0	22.3	30.0
GAS										
Number of burners	1	1	1	1	1	2	2	2	3	4
Gas consumpt. in G20-20mbar (m³/h)	0.27	0.35	0.40	0.54	0.72	0.81	1.08	1.43	2.15	2.86
Gas consumpt. in G30/31-37mbar (kg/h)	0.20	0.26	0.30	0.40	0.53	0.60	0.80	1.06	1.59	2.11
Double speed option						✓	✓	✓	✓	✓
Gas input connection	Fitting G1/2" cylindrical (ISO 228-1)									
ELECTRICITY										
Power supply	230V (+10% - 15%) – 50Hz Neutral mandatory									
Consumption (VA)	19	19	19	19	19	19 / 38	19 / 38	19 / 38	38	38
DIMENSIONS										
Weight (kg)	3.0	3.4	3.6	3.9	4.4	5.6 / 6.4	6.1 / 6.9	7.3 / 8.1	10.5	13.4
A (mm)	140	172	197	235	343	168	206	313	313	313
B (mm)	280	343	393	469	596	334	411	536	536	536
C (mm)	440	503	553	630	755	529	606	731	731	731

Certificate number **CE** : 1312 AP 230, 1312 AP 231, 1312 AP 232 et 1312 AP 249
 NOx Class : 5 (<50 mg/kWh)

