

HIGH PERFORMANCE HEATER

XFR



20%

ENERGY SAVINGS
COMPARED TO THE
STANDARD RANGE

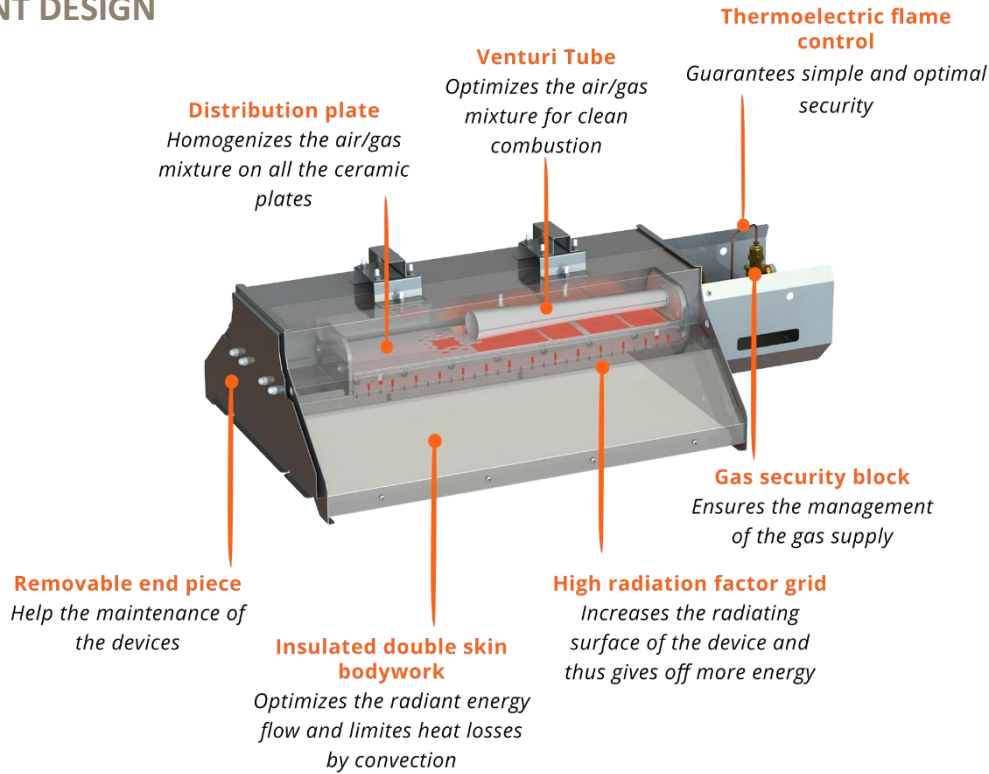
The efficient and economical heating solution



HIGH PERFORMANCE HEATER

XFR

EFFICIENT DESIGN

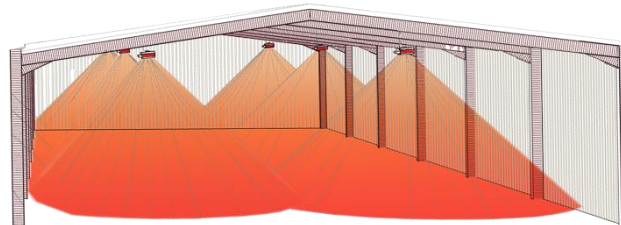


- ✓ High radiation factor up to 0.85 (according to EN419-2)
- ✓ Seasonal efficiency up to 98,2%!
- ✓ Energy savings and eco-design
- ✓ Double speed option*
- ✓ Stainless steel design



OPERATING EFFICIENCY

Quiet
Fast
Robust



Lightweight
Discreet
Made in France

Infrared radiation **brings comfort** directly to the users, thus generating **energy savings**.

With its high radiation factor, the XFR generates even more energy savings compared to a standard luminous heaters!

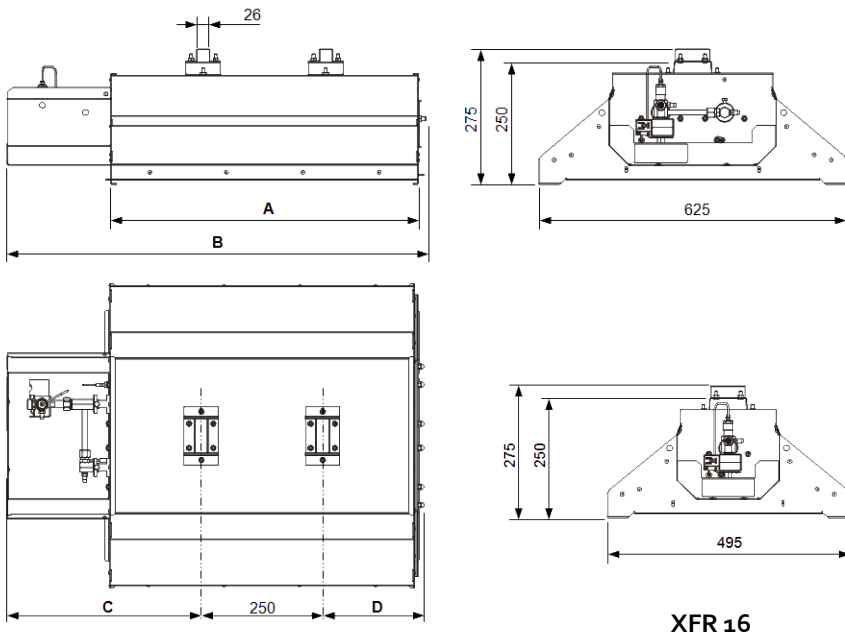
Even more efficient for **non-insulated buildings with a height greater than 10 m**.



HIGH PERFORMANCE HEATER

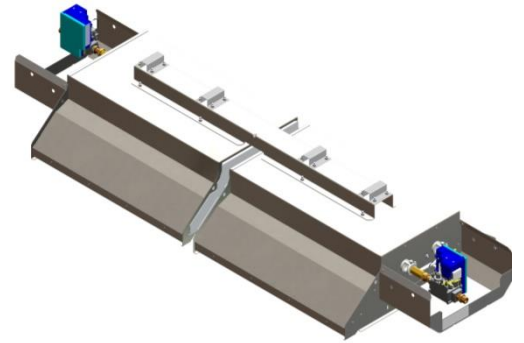
XFR

DIMENSIONS



The XFR 48-2 is made up of 2 XFR 24

The XFR 64-2 is made up of 2 XFR 32



TECHNICAL DATA

MODEL	XFR 16	XFR20 XFR 20-2	XFR24 XFR24-2	XFR32 XFR 32-2	XFR 48-2	XFR 64-2
Nominal power (kW)	6.4	7.4	8.9	11.4	17.8	22.9
GAS						
Number of burners	1	2	2	2	4	4
Gas consumpt. in G20-20mbar (m ³ /h)	0.62	0.70	0.85	1.09	1.69	2.18
Gas consumpt. in G31-37mbar (kg/h)	0.43	0.54	0.65	0.84	1.31	1.68
Double speed option		✓	✓	✓	✓	✓
Gas input connection	Fitting G1/2" cylindrical (ISO 228-1)					
ELECTRICITY						
Power supply	230V (+10% -15%) – 50Hz Neutral mandatory					
Consumption * (VA)	28	28 / 56	28 / 56	28 / 56	56	56
DIMENSIONS						
Weight (kg)	14.6	14.6 / 15.2	16.1 / 16.7	19.5 / 20.1	35.1	42.3
A (mm)	625	424	501	625	1053	1300
B (mm)	858	656	733	858	1473	1720
C (mm)	399	298	337	399	337	399
D (mm)	209	108	146	209	146	209

* Power consumption during the ignition of the heaters (45 seconds)

Certificate number **CE** : 1312 CL 5522
 NOx Class : 5 (<50 mg/kWh)



HIGH PERFORMANCE HEATER

XFR



TO CONTACT US

3 Cottages de la Norge
21490 Clénay FRANCE

Tél. : +33 3.80.76.74.70
E.mail : info@sbm.fr

www.sbm-international.net

