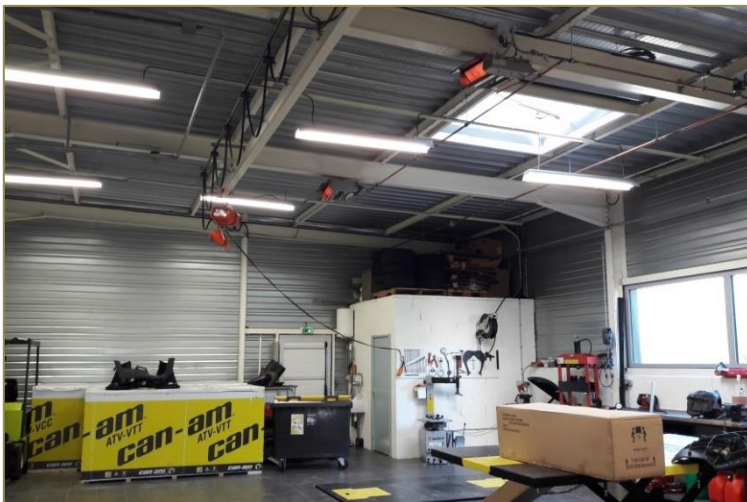


LUMINOUS HEATER (low-height)

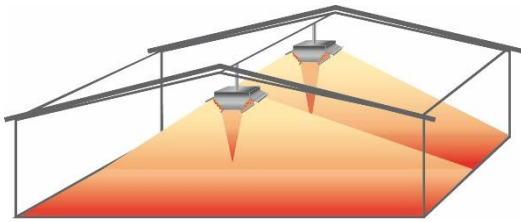
XLA-T



- ✓ Wide and uniform heat, suitable for low-rise buildings
- ✓ Exceptional heating comfort
- ✓ Simplified installation (no drilling of the building envelope)
- ✓ Stainless steel body and burners
- ✓ Flame control by thermocouple



OPERATION

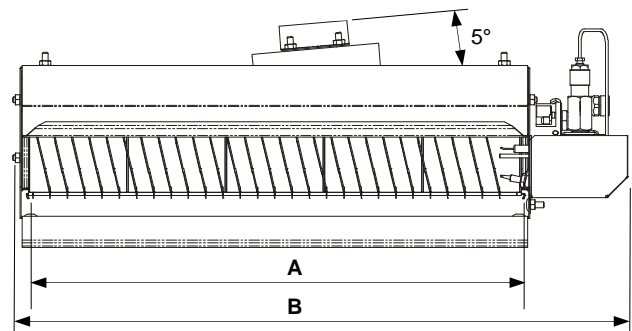
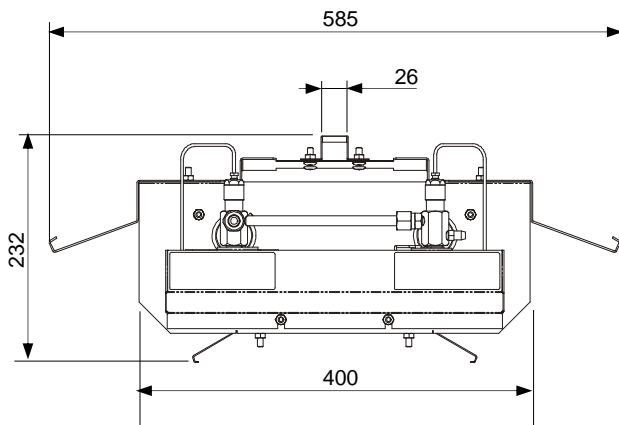


Infrared heating solution brings **comfort** directly to the end users, thus generating **energy savings**.

Efficient for **all types of buildings** up to 4m high.

DIMENSIONS

212 and 216 XLA-T



TECHNICAL DATA

MODEL	212 XLA-T	216 XLA-T
Nominal power (kW)	11.3	15.0
GAS		
Number of burners	2 (inclined to 45°)	2 (inclined to 45°)
Gas consumpt. in G20-20mbar (m³/h)	1.08	1.43
Gas consumpt. in G25-25mbar (m³/h)	1.26	1.66
Gas consumpt. in G31-37mbar (kg/h)	0.80	1.06
Gas input connection	Fitting G1/2" cylindrical (ISO 228-1)	
ELECTRICITY		
Power supply	230V (+10% - 15%) – 50Hz Neutral mandatory	
Consumption* (VA)	56	56
DIMENSIONS		
Weight (kg)	8.5	9.6
A (mm)	380	505
B (mm)	506	630

* Electricity consumption when the heaters are switched on (45 seconds)

Certificate number **CE** : 0461 CM 0994

Nox class : 5 (<50 mg/kWh)

